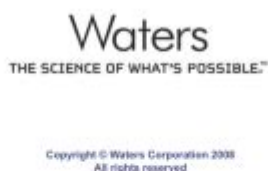


Empower 2 Installation And Configuration Guide



empower 2 installation and configuration guide

empower 2 installation and configuration guide

Embarking on the journey to install and configure empower 2 is a significant step for any organization looking to streamline document management and enhance user productivity. This comprehensive empower 2 installation and configuration guide will walk you through every essential phase, from initial system requirements to advanced customization. We'll cover the intricacies of setting up the core empower 2 software, integrating it with your existing infrastructure, and tailoring its features to meet your specific business needs. Whether you're a system administrator or a technical manager, this guide provides the detailed, step-by-step instructions necessary for a successful empower 2 deployment. Understanding the prerequisites, performing the installation correctly, and configuring empower 2 for optimal performance

are all critical elements that we will explore in depth.

- Introduction to empower 2
- System Requirements for empower 2
- Downloading the empower 2 Software
- Step-by-Step empower 2 Installation Process
- Post-Installation Verification and Initial Setup
- Configuring empower 2 Core Settings
- User Management and Access Control in empower 2
- Integrating empower 2 with Other Systems
- Customizing empower 2 for Specific Workflows
- Troubleshooting Common empower 2 Installation and Configuration Issues
- Best Practices for empower 2 Administration

Understanding empower 2 and Its Benefits

empower 2 is a powerful document creation and management solution designed to revolutionize how businesses handle their internal and external communications. It allows users to create, manage, and distribute professional documents with unparalleled efficiency. Key benefits include standardization of branding, reduced creation time, improved accuracy, and enhanced compliance with corporate guidelines. By centralizing document templates and assets, empower 2 ensures consistency across all communications, from marketing materials to internal reports.

The software's intuitive interface simplifies the complex process of document assembly, enabling even non-technical users to produce high-quality outputs. This empowers employees to focus on content rather than formatting, leading to increased productivity. Furthermore, empower 2's integration capabilities allow it to seamlessly connect with existing enterprise systems, such as CRM and ERP platforms, creating a cohesive digital ecosystem. This article will serve as your definitive empower 2 installation and configuration guide, covering all aspects necessary for a smooth and effective deployment.

Prerequisites for a Successful empower 2 Deployment

Before initiating the empower 2 installation process, it is crucial to ensure that your environment meets all the necessary system requirements. This proactive approach helps prevent potential issues and guarantees a stable and performant empower 2 system. Thoroughly reviewing these prerequisites is the first critical step in our empower 2 installation and configuration guide.

Hardware and Software Requirements

empower 2 requires specific hardware and software configurations to function optimally. These typically include:

- **Server Specifications:** A robust server with adequate processing power (e.g., multi-core processors), sufficient RAM (e.g., 16GB or more depending on user load), and ample storage space for the empower 2 application and its data.
- **Operating System:** Compatibility with supported Windows Server versions is essential. Consult the official empower 2 documentation for the most up-to-date list of supported operating systems.
- **Database Requirements:** empower 2 often relies on a relational database management system (RDBMS) to store its data. Supported databases like Microsoft SQL Server or Oracle need to be installed and configured prior to empower 2 installation.
- **Client Machine Requirements:** For end-users accessing empower 2, client machines will need to meet minimum specifications for operating systems, RAM, and browser compatibility.
- **Network Infrastructure:** A stable and reliable network connection is paramount for seamless communication between the server and client machines.

User and Permissions Setup

Proper user account and permission setup is vital for security and operational efficiency. This includes:

- **Administrator Account:** An account with administrative privileges will be required for the empower 2 installation.

- **Service Accounts:** Specific service accounts might be needed for empower 2 to interact with the operating system and database.
- **Database Permissions:** The empower 2 installation process will require specific permissions within the database, such as ``CREATE TABLE``, ``INSERT``, and ``SELECT`` privileges.

Licensing and Activation

Ensure you have the correct empower 2 licenses available and understand the activation process. This typically involves obtaining a license key or file from the vendor. Having this information readily accessible will streamline the installation and prevent delays.

Downloading the empower 2 Installation Files

The next step in our empower 2 installation and configuration guide is to obtain the necessary software files. This usually involves downloading the installer from the official empower 2 vendor website or a designated portal.

Accessing the Download Portal

You will typically receive login credentials or a download link from your empower 2 provider. Navigate to this portal to locate the latest version of the empower 2 software installer.

Selecting the Correct Version

It's important to download the version of empower 2 that aligns with your purchased licenses and the system architecture you are deploying (e.g., 32-bit or 64-bit). Always opt for the most stable release unless specifically instructed otherwise.

Step-by-Step empower 2 Installation Procedure

This section details the actual installation of the empower 2 application. Following these steps precisely will ensure a smooth and successful setup. This is the core of our empower 2 installation and configuration guide.

Running the Installer

Locate the downloaded empower 2 installer file (typically an .exe or .msi file) and double-click it to launch the setup wizard.

Installation Wizard Walkthrough

The empower 2 installation wizard will guide you through several stages:

1. **Welcome Screen:** Click "Next" to proceed.
2. **License Agreement:** Read and accept the terms and conditions to continue.
3. **Installation Type:** Choose between a typical installation (recommended for most users) or a custom installation if you need to specify installation directories or select specific components.
4. **Component Selection:** If you chose custom installation, select the desired empower 2 components.
5. **Database Configuration:** You will be prompted to provide details for connecting to your database. This includes the server name, database name, authentication method (Windows Authentication or SQL Server Authentication), and credentials.
6. **Installation Location:** Specify the directory where empower 2 will be installed.
7. **Ready to Install:** Review your selections and click "Install" to begin the process.
8. **Installation Progress:** The installer will copy files and configure the empower 2 application.
9. **Completion:** Once the installation is complete, you will see a confirmation screen.

Installing Optional Components

Depending on your licensing and needs, you may have options to install additional components such as reporting modules, integration connectors, or specific user interface extensions. Carefully consider which components are relevant to your empower 2 deployment.

Post-Installation Verification and Initial Setup

After the installation files are copied, it's essential to verify that empower 2 has been installed correctly and to perform initial configuration steps. This ensures the system is ready for use.

Verifying the Installation

Check for the following:

- **Application Launch:** Attempt to launch the empower 2 application from its shortcut or executable file.
- **Service Status:** Ensure any empower 2 related services are running in the Windows Services console.
- **Log Files:** Review the empower 2 installation log files for any errors or warnings. These are usually located in the installation directory.

Initial System Configuration

Upon the first launch, empower 2 may require some initial setup:

- **License Activation:** Enter your license key or upload the license file to activate the software.
- **Connection Settings:** Confirm or adjust database connection parameters if necessary.
- **System Paths:** Verify that internal file paths and directories are correctly set up.

Configuring empower 2 Core Settings

This stage involves tailoring the empower 2 application to your organization's specific operational requirements. Effective configuration is key to unlocking the full potential of empower 2.

Database Connection Settings

While often set during installation, it's good practice to review and confirm the database connection details. This ensures empower 2 can reliably access and update its data.

Email and Notification Settings

Configure empower 2 to send notifications and alerts. This involves setting up:

- **SMTP Server:** Enter the details of your outgoing mail server.
- **Sender Email Address:** Specify the email address from which empower 2 will send notifications.
- **Notification Preferences:** Customize which events trigger notifications and who receives them.

File Storage and Path Configuration

Define where empower 2 stores its documents, templates, and other critical files. Ensure these locations are accessible to the empower 2 services and have sufficient disk space.

Security Settings

Implement robust security measures:

- **Password Policies:** Define rules for user passwords, such as complexity requirements and expiration periods.
- **Authentication Methods:** Configure how users will authenticate, which might include integration with Active Directory for single sign-on.
- **Data Encryption:** Explore options for encrypting sensitive data at rest and in transit.

User Management and Access Control in empower 2

Managing users and their permissions is fundamental to a secure and functional empower 2 environment. This empowers administrators to control who can access what information and perform specific actions.

Creating and Managing User Accounts

Add new users to the empower 2 system, inputting their details such as name, email, and department. Existing accounts can be modified or deactivated as needed.

Role-Based Access Control (RBAC)

empower 2 typically employs a role-based access control model. Define roles (e.g., Administrator, Editor, Viewer) and assign specific permissions to each role. Users are then assigned to these roles.

- **Administrator:** Full control over the empower 2 system, including user management, configuration, and template creation.
- **Content Editor:** Ability to create, edit, and publish documents using approved templates.
- **Template Designer:** Permissions to create and modify document templates.
- **Viewer:** Read-only access to documents.

Assigning Permissions to Roles

Within the empower 2 administration interface, carefully assign granular permissions to each role. This might include permissions for:

- Accessing specific document folders.
- Modifying template properties.
- Publishing documents.
- Managing user accounts.

Integrating empower 2 with Other Systems

To maximize efficiency, empower 2 can often be integrated with other enterprise applications. This creates a seamless workflow and reduces manual data entry.

API and Web Services

Many modern business applications, including empower 2, offer Application Programming Interfaces (APIs) or web services. These allow for programmatic interaction between different software systems.

Common Integration Scenarios

Consider integrating empower 2 with:

- **CRM Systems:** To pull customer data for personalized documents.
- **ERP Systems:** To access product information or financial data.
- **Content Management Systems (CMS):** To leverage existing digital assets.
- **Digital Asset Management (DAM):** To manage brand assets like logos and images.

Configuring Integration Connectors

Follow the specific documentation provided by empower 2 and the target system to configure the integration. This often involves:

- Setting up API keys or authentication credentials.
- Mapping data fields between systems.
- Defining synchronization rules and schedules.

Customizing empower 2 for Specific Workflows

Beyond core settings, empower 2 offers customization options to align with unique business processes.

Template Management

Create, import, and manage document templates. This is a cornerstone of empower 2's functionality, ensuring brand consistency and efficient document creation.

- **Template Design:** Utilize the built-in template editor or import templates created in other design tools.
- **Variable Fields:** Incorporate dynamic fields that pull data from your integrated systems or user inputs.
- **Conditional Logic:** Implement logic within templates to display or hide content based on specific criteria.

Workflow Automation

Configure automated workflows for document approval, review, or distribution. This streamlines processes and reduces manual intervention.

Custom Fields and Properties

Add custom metadata fields to documents and templates to capture specific information relevant to your organization's data management strategy.

Troubleshooting Common empower 2 Installation and Configuration Issues

Even with careful planning, issues can arise. This section offers solutions to common problems encountered during empower 2 installation and configuration.

Database Connection Problems

Symptom: empower 2 fails to connect to the database.

Solutions:

- Verify database server status and network connectivity.
- Ensure correct database credentials and permissions are provided.
- Check firewall settings to allow communication between the empower 2 server and the database server.
- Confirm that the correct database drivers are installed.

Permission Denied Errors

Symptom: Users or the empower 2 service encounter "Access Denied" errors.

Solutions:

- Review file system permissions for the empower 2 installation directory.
- Check operating system user account control (UAC) settings.
- Ensure the service account has the necessary permissions on the database and file shares.
- Verify that user roles and permissions within empower 2 are correctly assigned.

Installer Errors

Symptom: The empower 2 installer fails with an error message.

Solutions:

- Rerun the installer as an administrator.
- Temporarily disable antivirus software during installation.
- Ensure all system prerequisites are met.
- Check the installer log files for specific error codes and messages.

Integration Failures

Symptom: Data is not synchronizing correctly between empower 2 and other systems.

Solutions:

- Double-check API endpoints, authentication credentials, and network connectivity between systems.
- Review the data mapping configurations for accuracy.
- Examine the logs of both empower 2 and the integrated system for error details.

Best Practices for empower 2 Administration

Maintaining a healthy and efficient empower 2 system requires ongoing administration and adherence to best practices.

Regular Backups

Implement a robust backup strategy for both the empower 2 application data and the underlying database. Regularly test the restore process to ensure data recoverability.

System Monitoring

Continuously monitor empower 2 server performance, database activity, and application logs. Proactive monitoring helps identify and resolve issues before they impact users.

Software Updates and Patching

Stay informed about empower 2 software updates and security patches. Apply them promptly to benefit from new features and address vulnerabilities.

User Training

Provide comprehensive training to empower 2 users on its features and best practices for document creation and management. Well-trained users contribute to the overall success of the implementation.

Documentation

Maintain up-to-date documentation of your empower 2 installation, configuration, customizations, and user roles. This is invaluable for future administration and troubleshooting.

This empower 2 installation and configuration guide has provided a detailed roadmap for deploying and managing this powerful document solution. By following these steps, organizations can establish a robust, efficient, and secure empower 2 environment, empowering their users to create and manage documents with greater ease and professionalism.

Frequently Asked Questions

What are the essential prerequisites for installing Empower 2?

Before installing Empower 2, ensure you have a compatible operating system (e.g., Windows 10/11), sufficient disk space, administrative privileges, and any necessary hardware components like chromatography systems or detectors are properly connected and recognized by the OS.

How do I perform a clean installation of Empower 2?

A clean installation involves completely uninstalling any previous versions of Empower or related software, rebooting your system, and then running the Empower 2 installer from the installation media or download. It's crucial to follow the on-screen prompts carefully.

What are the key configuration steps after installing Empower 2?

Post-installation configuration typically includes setting up the Empower 2 system database, defining user accounts and permissions, configuring instrument connections and instrument methods, and potentially setting up network communication for multi-user environments.

How do I integrate new instruments with Empower 2?

Integrating instruments involves using the 'System Configuration' tool within Empower 2. You'll need to select the instrument type, provide necessary driver information, and configure communication parameters to establish a link between the instrument and the Empower 2 software.

What is the recommended method for backing up the Empower 2 database?

Regular backups of the Empower 2 database are critical. You can perform backups through the 'System Configuration' utility by selecting the database backup option. It's recommended to schedule these backups and store them in a secure, separate location.

What are the common troubleshooting steps for Empower 2 installation or configuration issues?

Common troubleshooting involves checking system requirements, ensuring correct administrative privileges, verifying network connectivity, reviewing installer logs for error messages, and consulting the official Waters Empower 2 troubleshooting guide or support resources.

Can Empower 2 be installed on multiple workstations, and what is required for a networked setup?

Yes, Empower 2 supports networked installations. This typically involves installing a central server component and then deploying the client software on individual workstations. Proper network configuration, including firewall settings and IP addressing, is essential for seamless communication.

Additional Resources

Here are 9 book titles related to an Empower 2 installation and configuration guide, presented as requested:

1. *Empower 2: The Complete Installation & Configuration Manual*

This definitive guide walks you through every step of setting up your Empower 2 system. It covers hardware connections, software installation, and the initial configuration process for optimal performance. You'll find detailed troubleshooting tips to overcome common installation hurdles.

2. *Navigating Empower 2: Essential Setup and Optimization*

This book focuses on the practical aspects of getting your Empower 2 up and running smoothly. It provides clear instructions for configuring key features and optimizing settings for your specific workflow. Learn how to tailor the system to your needs for maximum efficiency.

3. Securing Your Empower 2 Environment: Installation and Configuration Best Practices

Prioritize the security of your Empower 2 system with this comprehensive guide. It details the secure installation procedures and essential configuration settings to protect your data. Understand best practices for user management and network security within the Empower 2 framework.

4. Troubleshooting Empower 2: Installation and Configuration Issues Resolved

For those facing challenges during setup, this book is an indispensable resource. It systematically addresses common installation and configuration problems encountered with Empower 2. Find step-by-step solutions and diagnostic techniques to get your system operational quickly.

5. Advanced Configuration for Empower 2: Beyond the Basics

Once the initial installation is complete, this book helps you unlock the full potential of Empower 2. Explore advanced configuration options to customize system behavior, integrate with other tools, and enhance functionality. Master the nuances of the system for expert-level operation.

6. Empower 2 Integration: Installation and Configuration for Seamless Workflows

This guide focuses on integrating your Empower 2 system with existing infrastructure and workflows. It provides installation and configuration advice for connecting Empower 2 to databases, other software, and hardware components. Achieve seamless data flow and operational synergy.

7. Empower 2 Deployment: A Practical Installation and Configuration Handbook
Designed for IT professionals and system administrators, this handbook offers practical guidance for deploying Empower 2. It covers the entire installation process, from pre-installation checks to post-installation verification. Learn efficient configuration strategies for multi-user environments.

8. Mastering Empower 2: Installation, Configuration, and Customization

This comprehensive resource aims to make you an expert in Empower 2. It covers the entire spectrum from initial installation and configuration to advanced customization options. Gain the knowledge needed to adapt Empower 2 to your unique operational requirements.

9. Empower 2: A Step-by-Step Installation and Configuration Journey

Embark on your Empower 2 setup with confidence using this detailed, step-by-step guide. Each stage of the installation and configuration process is clearly explained with accompanying visuals. Follow along to ensure a successful and accurate system setup.

Empower 2 Installation And Configuration Guide

[Back to Home](#)